



LOU  
*Loulou*  
LOU

By Galerie Carole Decombe  
Art, Design and Fashion  
Los Angeles - Paris

DESIGN

# EMMANUEL LEVET-STENNE



Born in 1969, Emmanuel Levet Stenne lives and works in the Fontainebleau area. After studies in design at the ENSCI/Les Ateliers in Paris, and being initiated to metal work, he joined Eric Schmitt's team in 2001. Since 2014, he has been creating his own pieces of furniture and lighting. He has also worked with ceramist Isabelle Sicart to design two series of consoles and side tables. Emmanuel Levet Stenne's design is guided by a search for simplicity and balance. This is where shapes, materials and technical processes must meet, he says. His works explore the language of materials, mixing brass with stone, wood or glass. He collaborates with craftsmen to polish and soften the alabaster or marble and carve out a roundness, almost an emotion. Bronze and aluminium are often the structure of his pieces, they are casted to obtain fluid forms, their curves shape contemporary, elegant and refined pieces.



Left to right:

"Samara" 3-panel screen / "Flush" desk / "Edge" floor lamp / Alabaster wall lamp /  
"Flush" coffee table / "Night Cup" table lamp / "Elytre" stand / "Elytre" console

# ISABELLE SICART



Born in Marseille in 1970, Isabelle Sicart lives and works in Paris. After studying ceramics at the Graduate school of Applied Arts, she joined the Lalique creation studio in 1991. Later, she started developing her very own designs that combine precision and softness. Since 2004, she has been producing and modeling ceramic objects, unique pieces or in limited series. She has also worked with designer Emmanuel Levet Stenne to create two table collections with enameled stoneware feet or top, eg. the "Polka" pedestal table, the "Sirtaki" console and the "Fado" coffee table.



Left to right:

Two-part white sculpture / Mat black vases / "Nelken" table lamp / "Llum" table lamp /  
"Elliptica" hanging light / "Vermeer" mirror / "Face" wall light

# ISABELLE SICART & EMMANUEL LEVET-STENNE



In 2013, designer Emmanuel started a 4-handed work collaboration with Isabelle Sicart, where their own particular know-how meet and a dialogue between different materials emerges. From this prolific association, an original set of pieces came out, made up of enameled sandstone, lacquered metal or polished bronze, designed especially for parisian Galerie Carole Decombe.



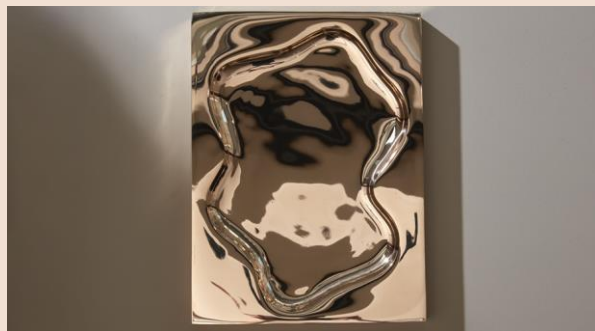
Left to right:

"Volta" side table / "Sirtaki" console table

# ISABELLE SICART & FRANCESCO BALZANO



From their collaboration came out beautiful pieces of art decorative. The poetic sculpture all have a function: a vase, a coffee table, sconce, candle holders and a set of trays. The shape is free, the ceramic makes the drawing appealing, and the drawing makes the ceramic marvelous.



Left to right:

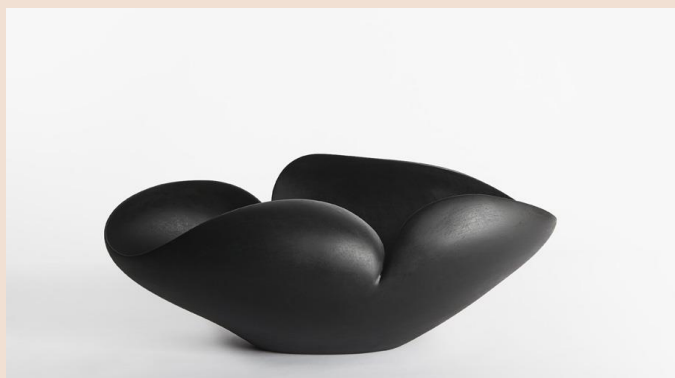
"Uccelli" side table / Set of 3 candle holders / Bronze plate

# HELLE DAMKJÆR



A ceramist and multi-talented designer, Helle Damkjær was born in Denmark and has been living in France for twenty years. She has worked for luxury firms in New York, Tokyo, Paris and Copenhagen such as Kitani, Georg Jensen, Tai ping and Guerlain.

Today she is the recipient of several prestigious awards (Red Dot Design Award, Design Plus Award, Wallpaper magazine design award ...) and one of the most recognised names in contemporary Danish creation design.



Left to right:

"Void 1" sculpture / "Void 2" sculpture / "Fruit of Life" lamp / "Yin Yang" Sculpture / "Black Botanica 1" sculpture

# NICOLAS & SEBASTIEN REESE



Nicolas & Sébastien Reese (Reese Studio) worked, in one case, in the world of fine arts and, in the other, in the film and graphics industry before they united their skills in a decoration studio. Their expertise in the art of classic or contemporary decor is widely recognized by major international architects and decorators (Jacques Grange, Jacques Garcia, Cs Decoration in Paris, Mhz in London, Peter Marino and Couturier in New York...).



Left to right:

"Lou" side table / "Acamas" Mirror / "Echo II" mirror / "Melograno" mirror /  
"Echo III" mirror



ART

# GODELEINE DE ROSAMEL



Born in 1968 in Lille France, Godeleine de Rosamel lives and works in Los Angeles. After graduating from ERG (Ecole de Recherche graphique) in Brussel, she worked as a painter and illustrator for 10 years in Paris. Since moving in 2011 in Los Angeles, she started working with ceramics full time and is currently collaborating with several galleries in the US. She likes that her work let her play first at being the original creator of imaginary life forms and then at enacting the evolutionary process by which they struggle to adapt and perfect themselves. After spending so much time watching how the animals were growing and evolving, she realized that it was time to give them their own biotope of plants and trees, that hopefully will develop and mature in relationship with them. Creating the plants proves as complicated as creating the animals. Of course, all life forms are sophisticated and there is no reason for the vegetal kingdom to be any easier to imagine and create than the animal one. This new development in her work follows Godeleine's interest in natural history, evolution and the wonders of Nature in general.



# MONA OREN



Laureate of the Liliane Bettencourt Prize pour L'intelligence de la main in 2018, Mona Oren develops, in her artistic practice, a center of expertise in molding and casting in wax. Wax, this "living", "organic" material that one may perceive in terms of its vulnerability: fragile, sensitive to aging or heat, it is under a constant threat of deformation. It is also an "intimate" medium. If nature and vegetal world were originally the source of inspiration for Mona Oren's work, she has now turned towards a more abstract and formal direction, while questioning her personal history. Mona Oren's approach, which exploits evocative and formal force of the materials, can be likened to a post-minimalist practice; however, she enriches it with a more volatile emotivity. Symbolism, eroticism, humor are also present, alongside with doubt and modesty. The layers of meaning which add up in the viewer's eye are more delicate, translucent, than the statements of intent. They are composed by successive thin layers, by infinitesimal films, - between depth and fragility. The works by Mona Oren were shown in numerous exhibitions, both in museums and galleries, in France and abroad.



Left to right:

"The Cabbage VI" sculpture / "Cocoon VII" sculpture

VINTAGE

# VINTAGE PIECES



Left to right:

Sofa by Otto Schulz / Pair of chairs by Otto Schulz



Left to right:

Model No. 1 park bench by Folke Bensow / Swedish Grace sofa



Left to right:

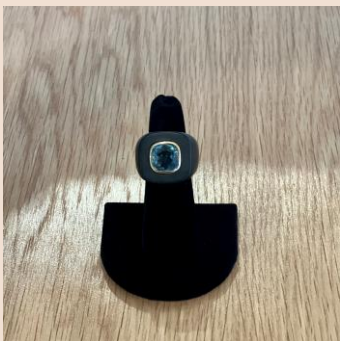
Urn by Ivar Johnsson / Ceramic hanging light by Carl Cunningham-Cole / Box with hand-made glass painting, French work



Left to right:

Straw marquetry powder box 18th century / Perfume bottle in crystal with hand made painting / Artepovera Venetian chalk box 18th century / Oil painting on canvas 18th century

# ANTIQUED JEWELRY



FASHION

# JULIE DE LIBRAN



Julie de Libran Paris is devoted to the highest standards of design, of responsibility and sustainable production. After her years working for Sonia Rykiel, Louis Vuitton, Versace and Prada, she decided to create her own brand. Each piece is numbered and made in very limited quantities with fabrics coming from the archives and end of rolls of the finest mills in Europe to eliminate wasteful overproduction (the philosophy of the brand).



Left to right:

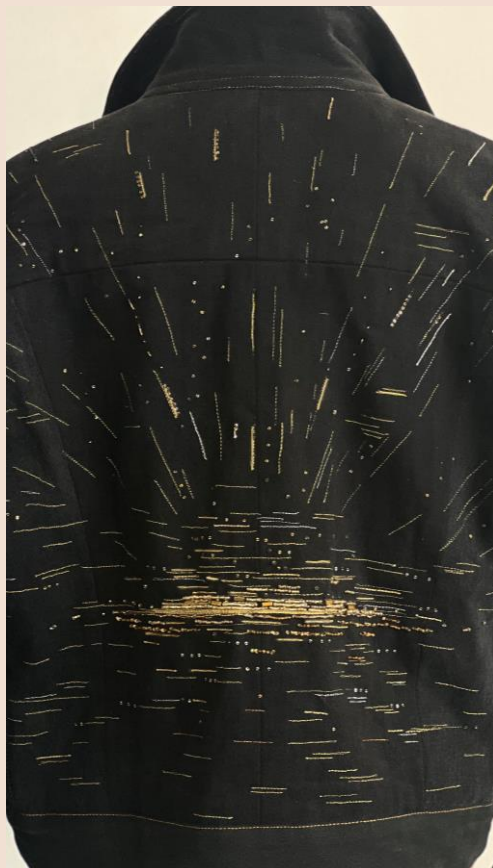
“Elizabeth” dress / “Eva” dress / Mariniere cashmere



# ALEXANDRA LATOUR



Alexandra Latour is a multi-faceted embroidery designer. She is creative, talented and committed. After her studies, she got involved in the world of fashion and luxury, especially within the house Lesage where she made embroidered pieces for the biggest entities of Haute Couture (Dior, Chanel, Yves Saint Laurent...), but Alexandra has desires elsewhere and creates her own brand « La Veste en Jean.» It's a brand with strong thickly, ecological and solidarity values, which reuses jeans as a raw material to design incredible and unique pieces.



Left to right:

“Branchage” denim jacket / “Sunset” limited edition denim jacket / “Astro” denim jacket  
can be customized with your astrological sign

# MANUELLE GUIBAL



Manuelle Guibal is not just a brand, it is a lifestyle. She likes to work with organic textile such as linen, cotton, silk, wool or cashmere. In any case, her work appeals to the sort of woman who like to dress easy, simple and comfortable, no matter the occasion. Manuelle wants to bring freedom to move, freedom to be oneself and freedom to put the pieces she creates together.



Left to right:

"Tobba" velvet jacket / "Tobba" velvet dress / "Wowo" sweater

# HAKAMAKI COUTURE



Junichi Hakamaki combines art and fashion as an artist and fashion designer. After his studies at Parsons School of Design, he worked as designer at Salvatore Ferragamo in Firenze, as head designer under Tom Ford at Gucci in Milano and designer director at Donna Karan in New York before creating his own brand Hakamaki Couture. His main concerns are sustainability and ecology. Hakamaki couture attempts to re-popularize obi (Japanese traditional long sash used to tie around the waist of kimonos) by reshaping it into a corset or bustier as fashion statement. It also represents the fusion of two diverse cultures, the east and the west.



Left to right:

"Wave" corset / "Pattern" corset / "Wave" corset

# NATHALIE SEILLER DEJEAN



Nathalie Seiller Dejean is not only an artist but a genius of the straw. She learned to make raw straw by herself from books and use ancient braiding techniques as well as the ones she created on her own. Nathalie creates head jewelry, tiaras, headbands, hat and clips flowers. They are all one-of-a-kind pieces of art. Nathalie wish to transform each pieces in wonderful stories as in the fairy tale Rumpelstiltskin who changes the straw into gold.



Left to right:

"Palais Royal" tiara / "Forget me not" tiara / "Seaside / Hoedic" tiara



Do not hesitate to contact us for further information or custom requests.

Contact :

**Loulou**

**8282 Melrose Avenue,**

**Los Angeles, CA 90046**

[carole@decombe.com](mailto:carole@decombe.com)

[lorraine@loulouofficial.com](mailto:lorraine@loulouofficial.com)

Port. 310 467 70 36 / 424 436 9289

**Galerie Carole Decombe**

**30 rue de Lille, 75007 Paris**

[cecile@galeriecaroledecombe.com](mailto:cecile@galeriecaroledecombe.com)

Tel. 01 40 20 00 12