

LA BOUTIQUE  
BY  
GALERIE CAROLE DECOMBE

# GALERIE CAROLE DECOMBE

DECORATIVE ARTS & DESIGN

## **PARIS**

30 rue de Lille  
75007 Paris

## **LOS ANGELES**

Pacific Palisades



## Carole Decombe

Carole Decombe first opened in 2007 her own gallery in the suburbs of Paris where she presented an eclectic choice of antiques. She then followed with her gallery in Paris, Rue de Lille in 2011 among the galleries of the Carré Rive Gauche. 2016 marked a major direction with the opening of Galerie Carole Decombe in Los Angeles.

Her universe today is split between her parisian gallery and the space launched on September 2016 at 8629 Melrose Avenue in the heart of the design district LCDQLA. The galleries celebrate a selection of artists whose core motivation of their artistry encourage a dialogue between fine art, craft and creativity. Carole always selects 18th - 20th century rare Scandinavian furniture and curates these with decorative arts of the 21st century to create a harmonious dialogue. Both of her spaces are an invitation to discover what would be described as her artistic convictions. "I am fascinated with the creative process and the narrative behind it the core of craftsmanship. Artwork represented in my gallery showcases the refinement of authentic handmade objects of art. My collaboration with the artists all encompassing and informs my vision as a gallerist."

You might wonder how she comes to be here in the heart of Paris, in the artistic center for collectors and here in Los Angeles in the heart of the design district. After studies in history of art at the Ecole du Louvre, specializing in architecture and decoration of large mansions and houses, Carole Decombe's first job was not very far away from her gallery in the Carré Rive Gauche, working for an antique dealer on quai Voltaire. As a buyer, Carole spent a lot of time at public sales in Paris, particularly in the Drouot auction rooms, and this is where her passion for art, and her eagerness to search for rare items really began and where she gained an educated eye.

Carole continually looks for authenticity in her work, the simplest way of passing on this unceasing emotion at an object, a creation, a person. She likes to set the stage, boldly putting things together, mixing the decorative arts of the modern period with contemporary pieces. This is why she knew, when she opened the gallery that bears her name on 30, rue de Lille that creators had to be part of her story. Since then she acclaimed the work of several artists as Isabelle Sicart, Helle Damkjaer, Emmanuel Levett Stenne, Nicolas et Sebastien Reese, Diana Lui... convinced of their talent and their artistic sincerity, without forgetting the beautiful work of the past.



## Emmanuel Levet Stenne

A graduate designer from ENSCI-Les Ateliers, Emmanuel Levet Stenne specialized in interior design before joining the workshop of designer Eric Schmitt in 2001. He works with him on a large number of furniture, exhibition projects in France and abroad. He is very attached to his work ethic and balance in his design. Furthermore he develops a personal work where materials and style are used at the core of a formal research.



"CAP"  
Table Lamp





# Isabelle Sicart

Born in Marseille in 1970, Isabelle Sicart lives and works in Paris.

After studying Ceramics at the Graduate school of Applied Arts, she joined the Lalique creation studio in 1991. After these initial years of experience, Isabelle Sicart then began to design her first collection in 1999, eight years after starting her career at Lalique. This first ceramic collection was for the design firm Les Céramiques. A year later, she created an earthenware collection. Isabelle Sicart designed collections for French furniture-maker Les Migrateurs as well as designing lamps for French pottery maker, the Faïencerie de Lunéville.

Since 2004, she has been producing and modeling ceramic objects, unique pieces or in limited series. She has also worked with designer to create two table collections with enameled stoneware feet or top, eg. the “Polka” pedestal table, the “Sirtaki” console and the “ Fado ” coffee table



# "SYRINX"

Candle Holder  
Single-Flower Vase



"POMONE"  
Wall Lamp





"GUIDETTE"

Cup





# Godeleine de Rosamel

Born in 1968 in Lille France, Godeleine de Rosamel lives and works in Los Angeles. After graduating from ERG (Ecole de Recherche graphique) in Brussels, she worked as a painter and illustrator for 10 years in Paris. Since moving in 2011 in Los Angeles, she started working with ceramics full time and is currently collaborating with several galleries in the US.

She likes that her work let her play first at being the original creator of imaginary life forms and then at enacting the evolutionary process by which they struggle to adapt and perfect themselves. After spending so much time watching how the animals were growing and evolving, she realized that it was time to give them their own biotope of plants and trees, that hopefully will develop and mature in relationship with them. Creating the plants proves as complicated as creating the animals. Of course, all life forms are sophisticated and there is no reason for the vegetal kingdom to be any easier to imagine and create than the animal one. This new development in her work follows Godeleine's interest in natural history, evolution and the wonders of Nature in general.





#1881 - #1884 - #1883



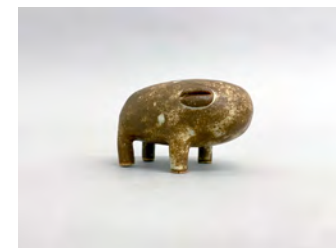
#1804 & #1802



Box



Box

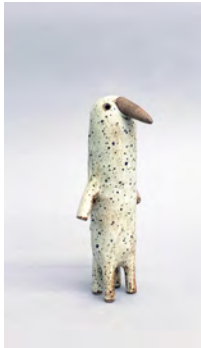


#1790





#1758



#1762



P3



Trees - Tree with large petals - #1790



P1



P2



P5



#1805



## Caroline Scholl

For 20 years, Caroline Scholl, who trained at the Nancy School of Fine Arts, has put her creativity to work for Lalique, where she was head of the design office. In 2015, she founded Secret d'Alchimie, a studio where she experiments with her favorite material: glass.

Caroline Scholl enjoys the challenge of combining glass with other materials. She likes working with glassmakers, wrought-iron artisans and leatherworkers to bring people and materials together and develop her rich, inventive vision of fine crafts. She creates amazing pieces for interior designers as well as new kinds of objects for home fragrances.



# "ATHANOR"

Candle / Vase





# "DIFFUSEUR"

Diffuser





# Helle Damkjær

Elegance par excellence expressed in exclusive products which are created in a sensual and organic idiom.

The Danish designer and ceramicist Helle Damkjær is a perfect example of how esteemed designers today work with many different categories of design. Her natural sense for timeless aesthetics has already resulted in successful collaborations with luxury brands in New York, Tokyo, Paris and Copenhagen. Helle Damkjær's work include home accessories, furnitures, jewellery and ceramic.

Thanks to a very global culture having worked in Milan, London and New York and Kyoto, her style subtly merges a graphic and sculptural language with an artistic edge. Her talent of blending colours, volumes, and spaces illustrates her minimalistic and organic vision of the world.

Also her spiritual approach makes her extremely aware of the power of shapes and their presence in time and space.

"BOTANICA"  
Vase





# "YIN YANG" Sculpture

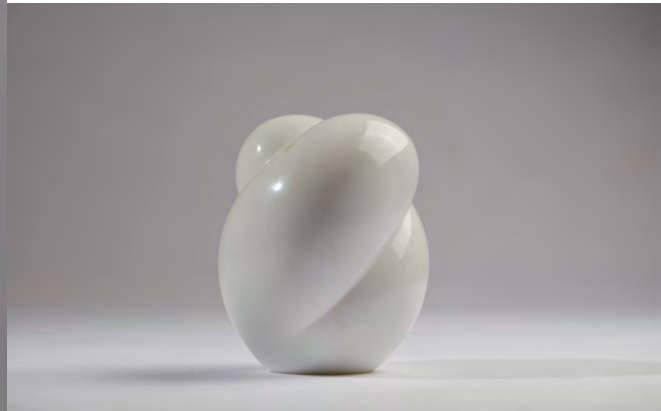


"SOLO"  
Sculpture



"HUG"

Satin or Polish  
Marble Sculpture







## Nathalie Seiller Dejean

A graduate of the Ecole Nationale des Beaux-Arts, Nathalie Seiller Dejean began her career as a press illustrator before creating accessories under the name Natacha Domercq. It all started by chance, with a pair of linen shoes that she painted for a friend. Delage, the flagship of French luxury craftsmanship, noticed them and asked her to design a collection for its Palais-Royal boutique.

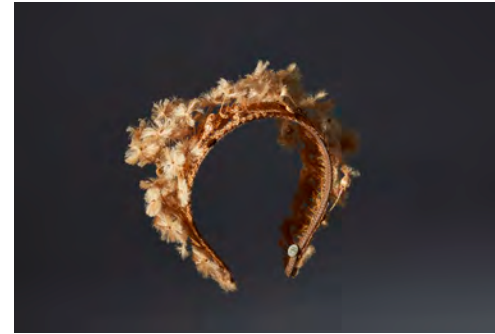
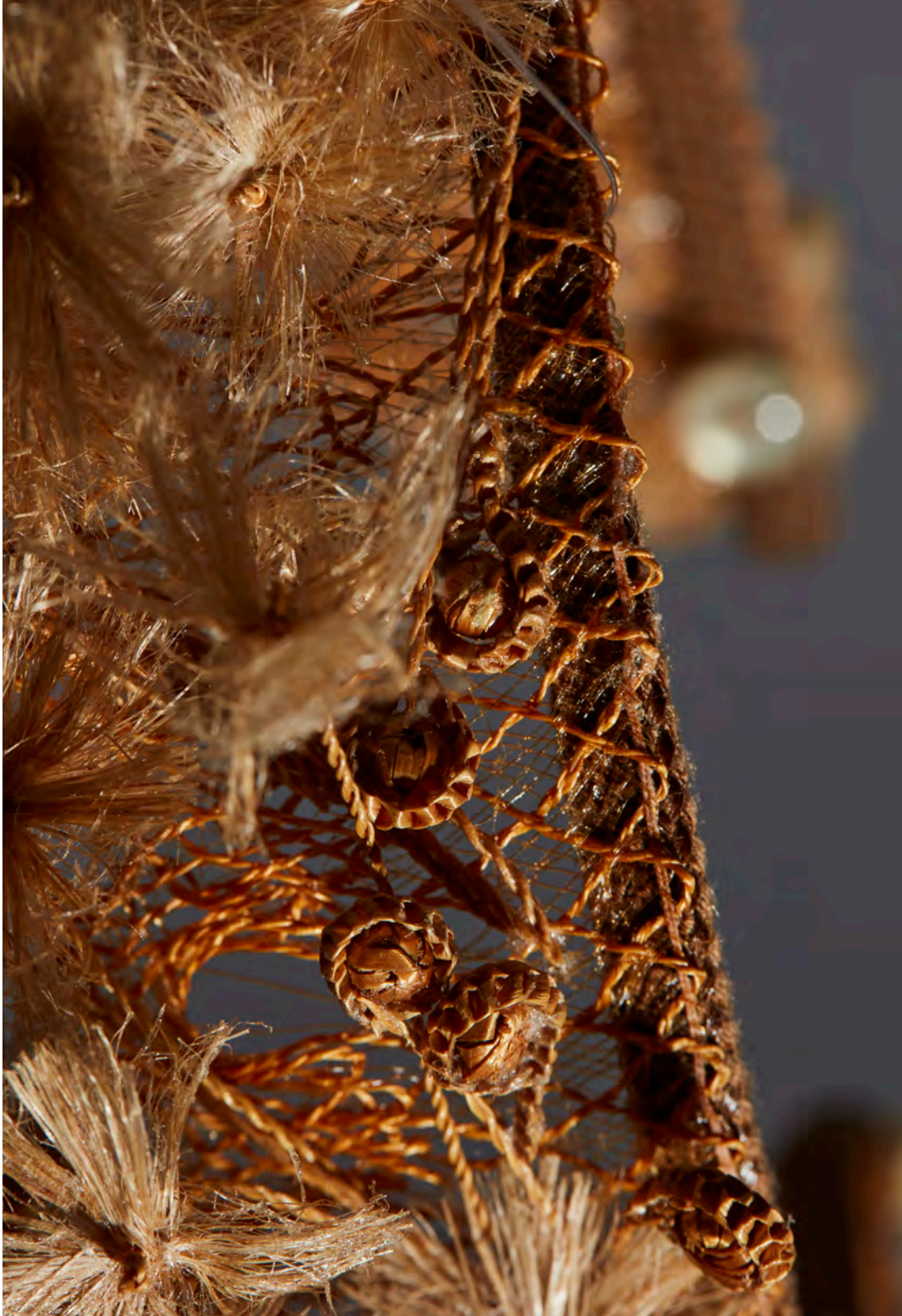
Nathalie draws her inspiration from art and nature, but above all from the quest for beautiful materials such as old lace. Moved by the beauty and the meticulous work of these fabrics of the past, she tries to give them back life by transforming them. She dyes, assembles, inlays and shapes bodice bouquets, brooches, necklaces and cuffs, gloves. Her unique pieces find their place in boutiques and trend-setting stores, or art galleries. Fashion designers, such as Christian Lacroix, use her accessories for their fashion shows.

For more than fifteen years, long before headbands and other head accessories became trendy again, Nathalie Seiller-Dejean has been exploring the possibilities of headaddresses by giving them a contemporary and dreamy touch. Barneys and Takashimaya New York are the first to highlight them. Bridal headpieces, with their “one-day party” dimension, allow her to give free rein to her imagination. Here, no rhinestones or sequins, but gauze, feathers, tartans, porcelain, starfish, Murano glass and straw, all enchanting with their delicacy and their originality.



# "FLUFFY DANDELION"

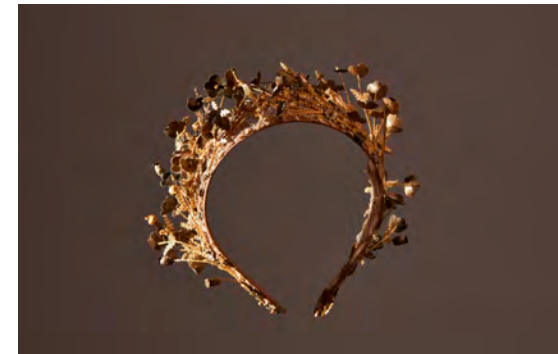
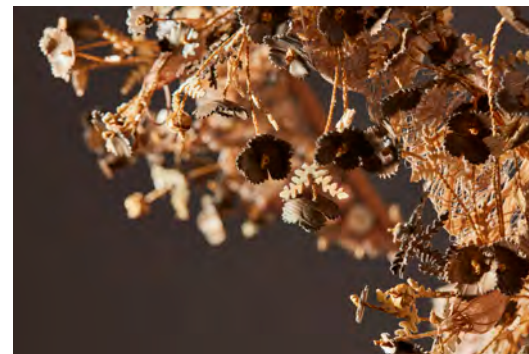
Tiara





# "PALAIS ROYAL"

Tiara





"FORGET ME NOT"

Tiara





# "FÊTES GALANTES"

Tiara





# "SEASIDE / HOEDIC"

Tiara







## LiliRoze

LiliROZE was very young when she first became keen on photography: she was fascinated, amazed by the photos that her father developed in the bath in their bathroom! The magic worked and she very quickly decided to make this her career, as it just seemed the obvious thing to do.

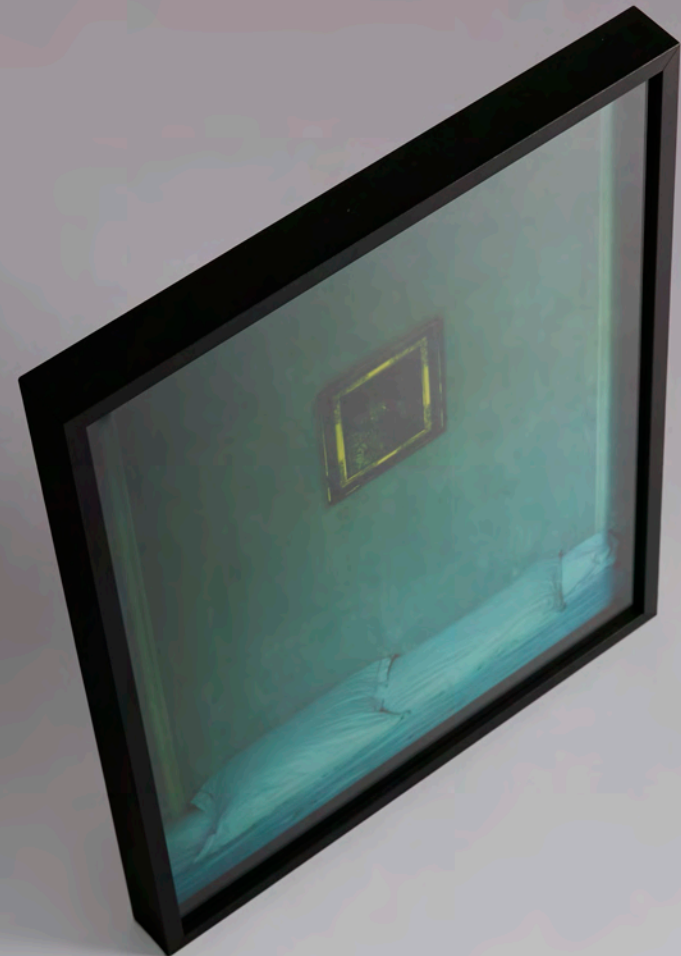
She gets her inspiration from her intimate life, she “expresses” what concerns her, what she knows about, a woman’s body. She does not try to reproduce real life, but to take pictures of impressions, the memory of a sensation. There has to be some kind of mystery, or the desire to tell a timeless story, and hence the imprecise outlines, the vague contours, this substance.

She has a very special way of taking photographs, she only works in natural light, seeks to take Polaroid pictures without a Polaroid camera by superposing various images. She carves out her dream.

Light, the expression in her subject’s eyes and also the hands are part of her creations, giving them an intense sensorial vibration.

Liliroze does not take photos of what she sees but of what she feels.

"BED"  
Photograph



"PARESSE"  
Photograph





# "RED FLYING SHOES"

Photograph



# ANTIQUES

## KÄHLER TABLE LAMP

40's





PORCELAIN CUP  
KPM, 50's





**POWDER BOX**  
late 18th century



"I am fascinated with the creative process and the narrative behind it - the core of craftsmanship. My collaboration with the artists all encompassing informs my vision as a gallerist"

Carole Decombe



